



DEALS IN :

PVC Wall Paneling, Ceiling, UV Marble Sheet,
Adhesive, Artificial Grass & Accessories

PRODUCT
PORTFOLIO

2024



Our Infrastructure

ABOUT US

JRG LAMINATES, we are the pioneer in interior decorating with a range of options for home decorations to office spaces. We are the '**CLASS A**' manufacturer of PVC Wall Panels with long term durability, best quality and sustainability.

Our panels are easy to install, low maintenance, waterproof and works well in difficult conditions and terrains. PVC wall panels are completely hassle free and upgrades the look completely. This interior wall paneling trend has replaced other wall finishes such as wallpaper, tiles cladding, and paint. The **PVC Wall Panels** is the most popular wall panel. They can be used to improve the appearance of your interiors, as well as the floor and furnishings.

Today, PVC panels have become a strong pillar in the construction industry that replaces wood in exterior applications.

The polyvinyl chloride panels are available in different thicknesses and shades, making them popular for decorating walls. In addition, the surface coating of a PVC is either solid or mesh, which makes it a perfect choice for usage.



PRODUCTS

We're Passionate to Giving Our Customers
The Best Helping Hands To Fulfill Their Dreams.



- PVC PANELS
- UV MARBLE SHEETS
- CHARCOAL LOUVERS
- DIGITAL MARBLE SHEETS
- HD & 3D SHEETS
- FRENCH MOULDING
- W.P.C. DOOR FRAME
- W.P.C. IMP LOUVERS
- FLUTED LOUVERS

A few areas to install PVC Panels include:

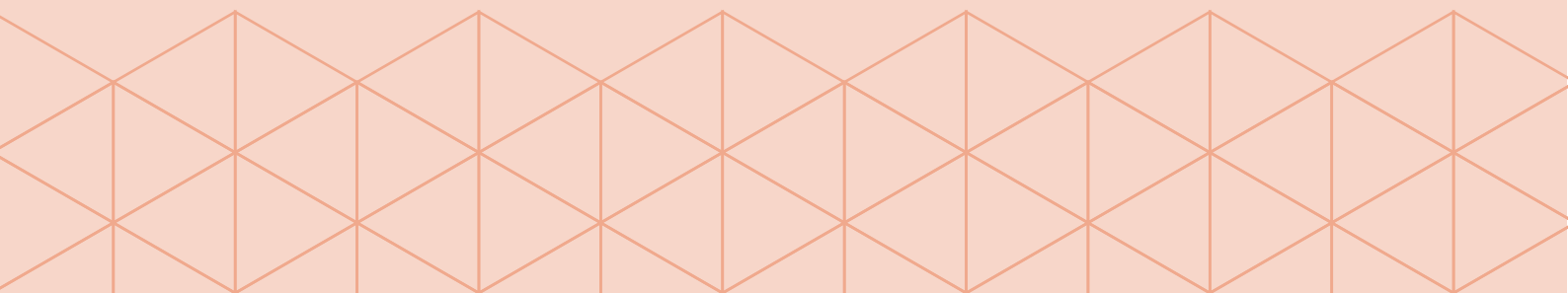
- Window & Door Surrounds
- Fascia & Soffit Trim
- Deck Skirting
- Architectural Mouldings
- Column & Post Wraps
- Porch Ceilings
- Groove Wall Panelling
- Corner Boards

Coming to the residential application, the PVC Wall Paneling turns out to be a suitable choice for the following spaces:

- Bedroom
- Living Room
- Kitchen
- Office
- Lobby, and
- Most importantly, the Roofs

Advantages of PVC Wall Panels :

- PVC wall panels can be very useful when there is dampness in a wall. It can resist moisture very well.
- PVC is an environment-friendly material. Much medical equipment and food packaging are made from it because they do not cause any harm to the environment. This makes it useful for schools, hospitals, and sports arenas.
- PVC is very resistant to moisture. It is free from cracks and pores, which prevents bacteria growth. The boards have a layer of polyurethane that gives them a smooth, plain surface. These boards are easy to clean. It is easy to clean the wall paneling because there is no dirt on it. These panels can be used in kitchens and bathrooms, as well as other rooms.
- When used on exterior surfaces of the house, they don't rust.
- They burn slowly because their ignition temperature is 60 C. They emit less smoke than wood, and they are less toxic in the natural environment.
- Because these panels are lightweight, the installation time is very short. These panels are easy to cut and install without the need for grout.
- The interlocking tongue and groove system allows for the fast fixing of many panels. This allows you to easily replace one panel if it becomes damaged.
- Insulating with PVC panels is easy.
- PVC panels can be recycled and old ones can be given to a recycling facility.
- PVC panels come in many different colors and designs. Designers have many options when it comes to creating a wall decoration.
- PVC panels have a finished surface. These panels do not require any additional finishing, such as painting or polishing.

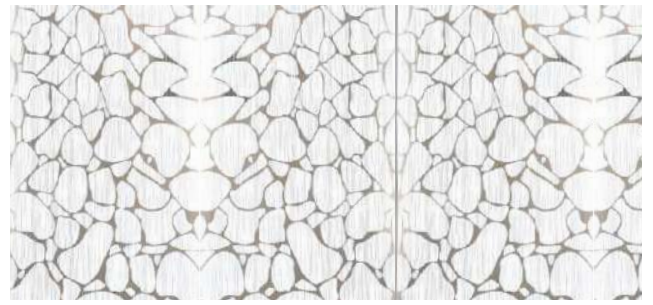


The background features a dark, almost black, field filled with intricate, white, wavy lines that resemble topographical contours or fluid, organic patterns. A single, solid, vertical orange line runs down the center of the page, passing through the middle of the word 'CEILING'.

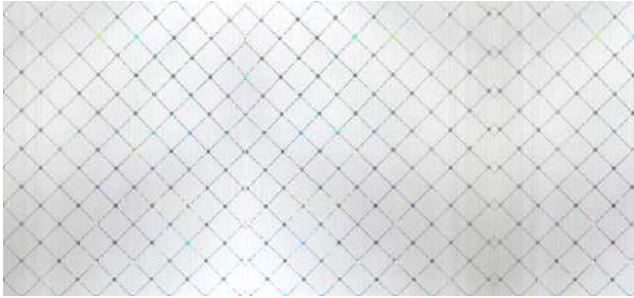
CEILING



JRG 1104



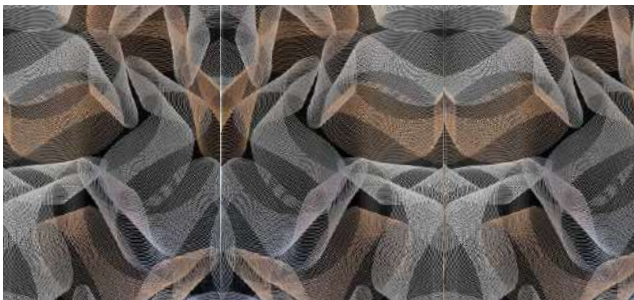
JRG 1120



JRG 1105



JRG 1124



JRG 1116D



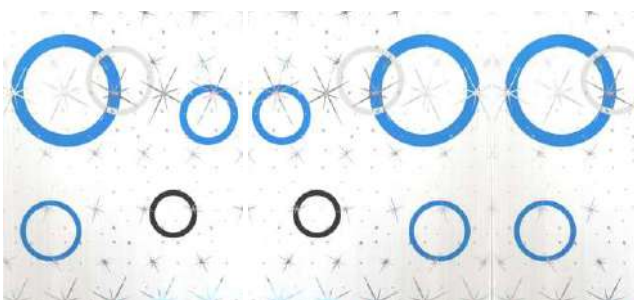
JRG 1125



JRG 1116L



JRG 1126



JRG 1109



JRG 1127



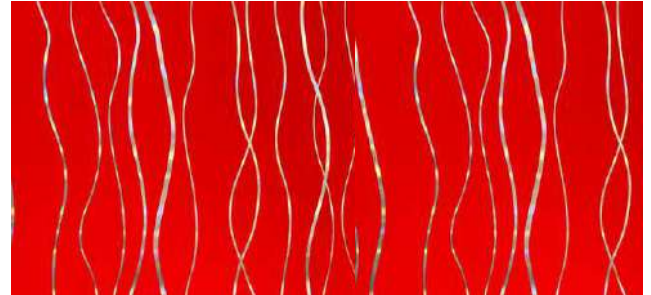
JRG 1129



JRG 343



JRG 1133



JRG 349



JRG 1113



JRG 1143



JRG 1120 D



JRG 1144



JRG 1140



JRG 1147



The background features a dark, almost black, field with intricate, white, wavy, organic lines that resemble topographical contours or fluid motion. A single, solid, vertical orange line runs down the right side of the page, extending from the top edge to the bottom edge. The text is centered horizontally and positioned in the upper-middle section of the page.

PVC WALL PANELING

Inspired by

NATURE

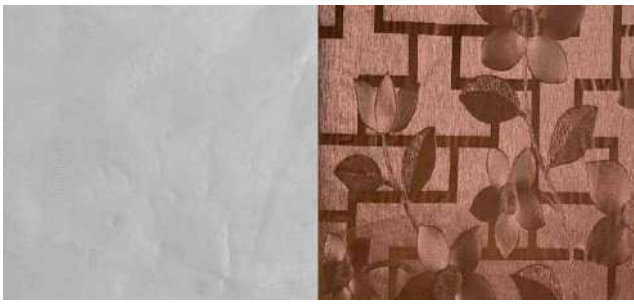
NATURE

NATURE

AND
ECO-FRIENDLY
LAMINATES



**GO GREEN
AND MAKE THE
ENVIRONMENT
CLEAN!!**



JRG 101

JRG 102



JRG 111

JRG 112



JRG 103

JRG 104



JRG 113

JRG 114



JRG 105

JRG 106



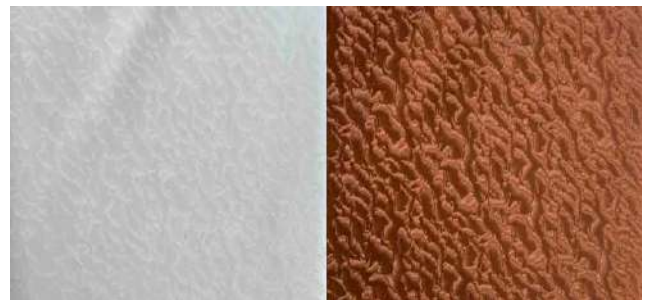
JRG 115

JRG 116



JRG 107

JRG 108



JRG 117

JRG 118



JRG 109

JRG 110



JRG 119



JRG 120

JRG 121



JRG 126

JRG 127



JRG 121

JRG 122



JRG 128

JRG 163



JRG 123



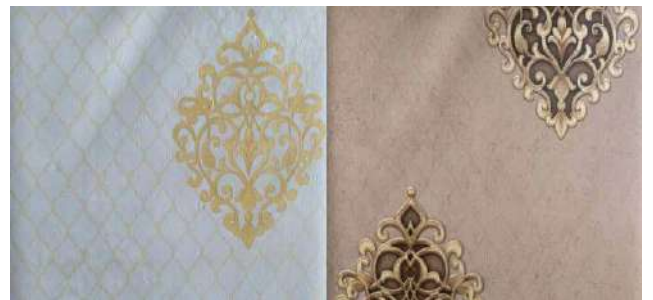
JRG 129

JRG 130



JRG 124

JRG 125



JRG 131

JRG 132



JRG 125/B

JRG 148



JRG 131

JRG 149



JRG 133

JRG 134



JRG 141

JRG 150



JRG 135



JRG 142

JRG 143



JRG 136



JRG 144

JRG 145



JRG 137

JRG 138



JRG 144

JRG 154



JRG 139

JRG 140

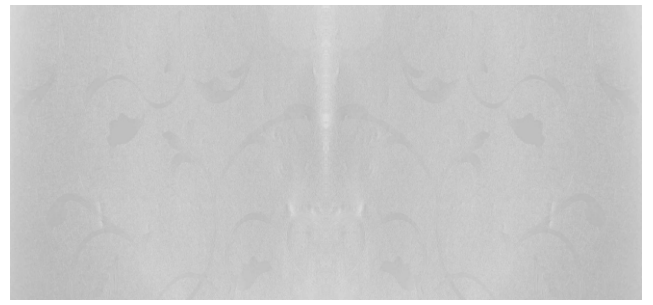


JRG 146

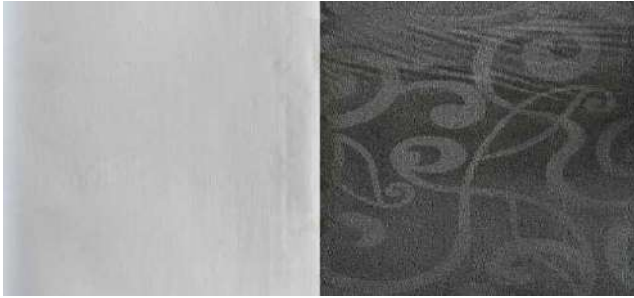
JRG 117



JRG 147

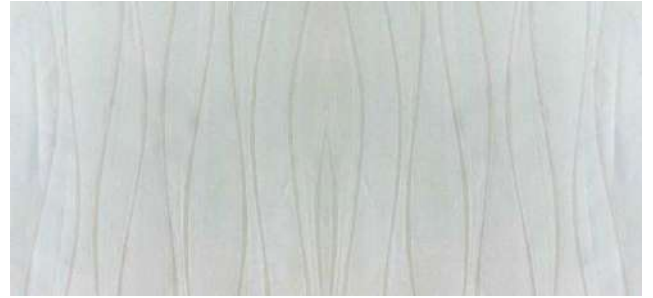


JRG 157



JRG 151

JRG 152



JRG 158



JRG 151

JRG 177



JRG 159

JRG 160

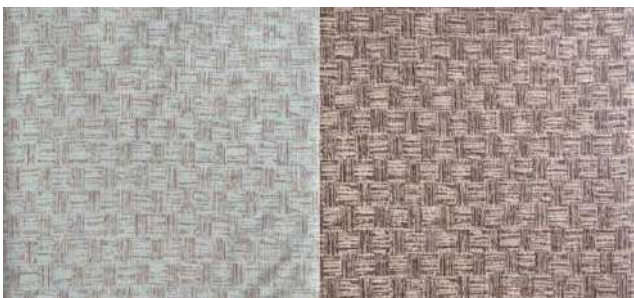


JRG 153



JRG 161

JRG 162



JRG 155

JRG 156



JRG 164

JRG 165



JRG 166



JRG 172



JRG 167



JRG 173



JRG 168

JRG 169



JRG 174

JRG 175



JRG 170

JRG 176



JRG 178

JRG 179



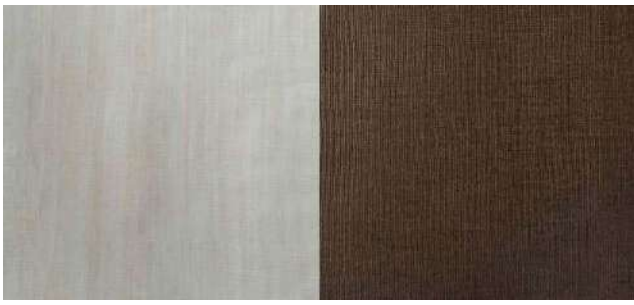
JRG 171



JRG 201

JRG 202





JRG 201

JRG 203



JRG 211

JRG 212



JRG 204

JRG 205



JRG 213

JRG 248



JRG 206

JRG 207



JRG 214

JRG 215



JRG 208

JRG 209



JRG 216

JRG 217



JRG 210

JRG 211



JRG 218

JRG 219



JRG 220

JRG 274



JRG 226

JRG 228



JRG 221



JRG 229



JRG 223



JRG 230

JRG 231



JRG 224

JRG 224



JRG 232



JRG 226

JRG 227



JRG 233

JRG 234



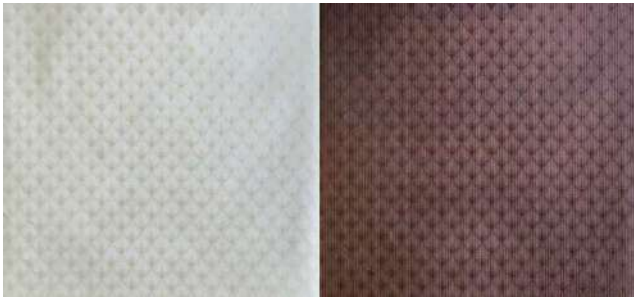
JRG 235

JRG 236



JRG 244

JRG 245



JRG 237

JRG 238



JRG 246

JRG 266



JRG 239



JRG 247

JRG 248



JRG 240

JRG 241



JRG 249

JRG 250



JRG 242

JRG 243



JRG 251

JRG 252



JRG 253

JRG 254



JRG 261

JRG 262



JRG 255

JRG 256



JRG 264

JRG 250



JRG 255

JRG 263



JRG 265



JRG 257

JRG 258



JRG 267

JRG 268



JRG 259

JRG 260



JRG 269



JRG 270



JRG 278

JRG 247



JRG 271

JRG 272



JRG 279

JRG 280



JRG 273

JRG 204



JRG 281



JRG 275

JRG 276



JRG 282



JRG 277



JRG 283

JRG 284





JRG 285

JRG 286



JRG 292

JRG 293



JRG 287

JRG 288



JRG 294



JRG 287

JRG 290



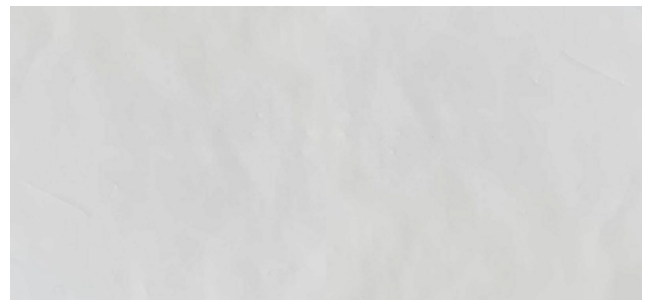
JRG 295

JRG 296



JRG 288

JRG 291



JRG Plain White



JRG 289

JRG 290

The background features a dark field with intricate, light-colored patterns. On the left and right sides, there are wavy, concentric lines that resemble topographical contours or marble veins. In the center-right area, a grid of thin, intersecting lines is visible. A prominent vertical line runs down the left side of the page, and another vertical line runs down the right side, both appearing to be part of the overall design.

UV MARBLE SHEETS

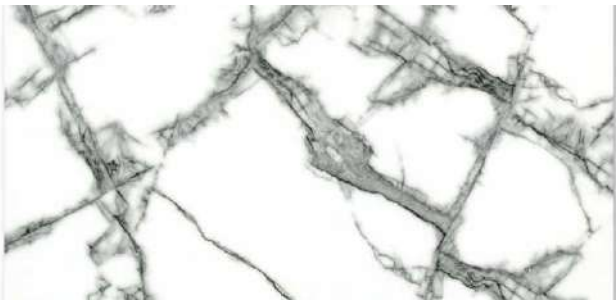
TREND

of stylish innovation

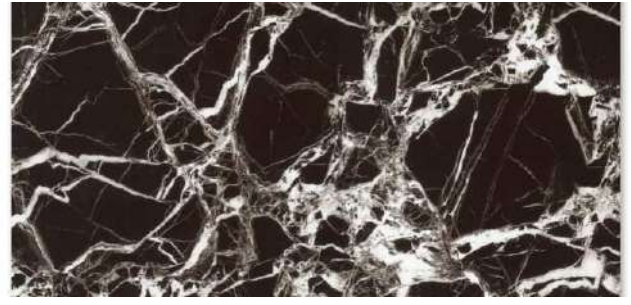


GO GREEN
AND MAKE THE
ENVIRONMENT
CLEAN!!

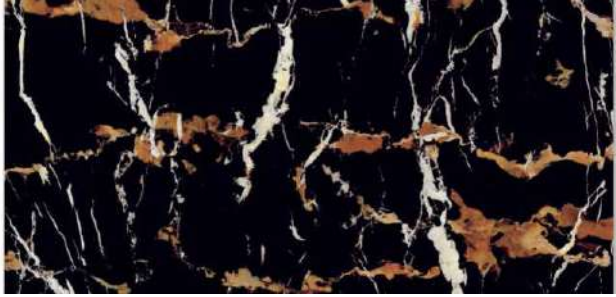




JRG 1001



JRG 1007



JRG 1002



JRG 1008



JRG 1004



JRG 1009



JRG 1005



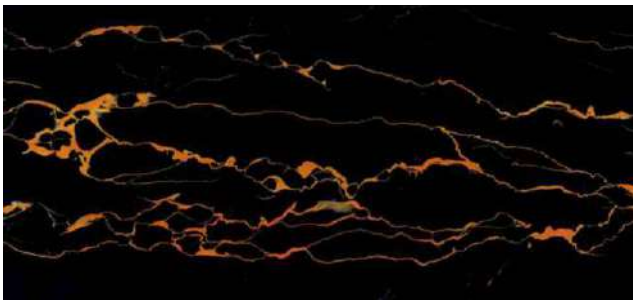
JRG 1010



JRG 1006



JRG 1017



JRG 1020



JRG 1025



JRG 1021



JRG 1026



JRG 1022



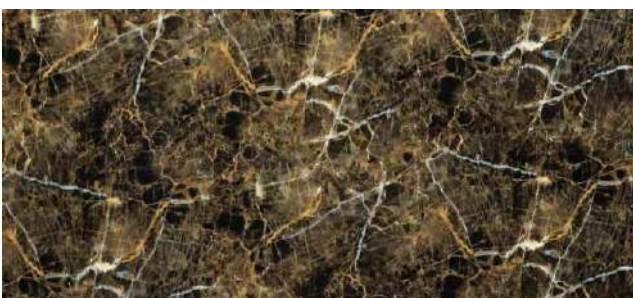
JRG 1028



JRG 1023



JRG 1030



JRG 1024



JRG 1039



JRG 1040



JRG 1047



JRG 1041



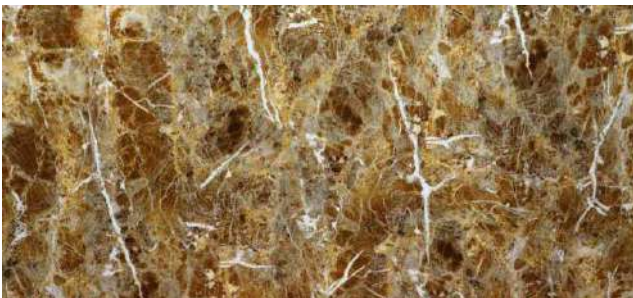
JRG 1048



JRG 1044



JRG 1050



JRG 1045



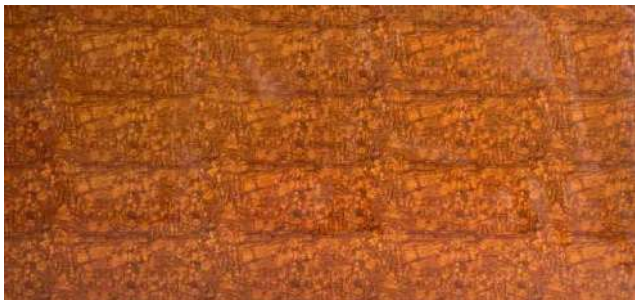
JRG 1051



JRG 1046



JRG 1052



JRG 1053



JRG 1054



JRG 1081



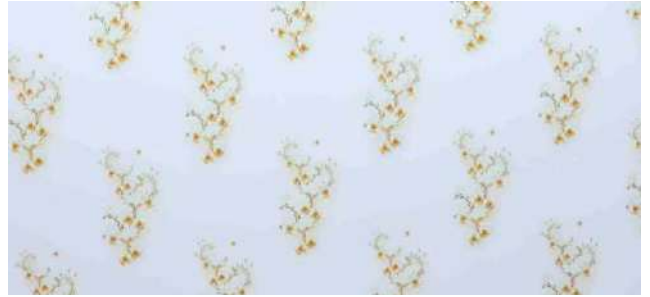
JRG 1082



JRG 1087



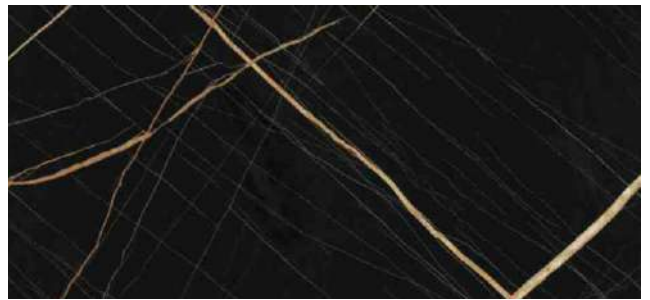
JRG 1092



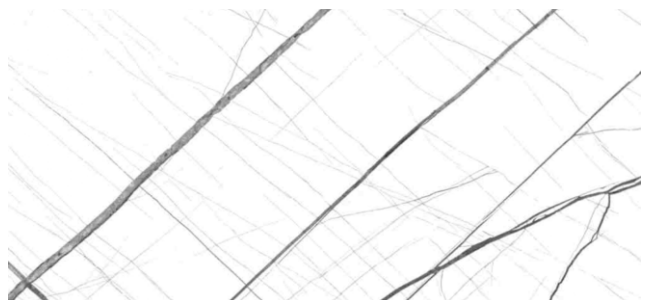
JRG 1096



JRG 1097



JRG 1129



JRG 1130



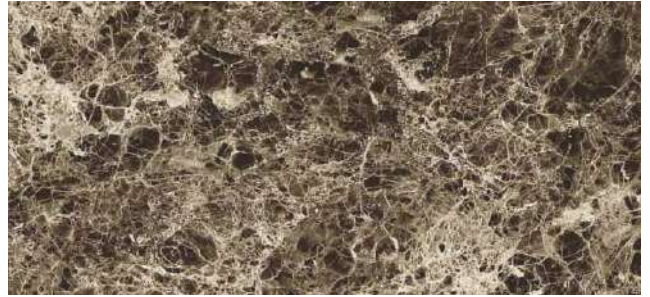
JRG 1131



JRG 1205



JRG 1201



JRG 1206



JRG 1202



JRG 1207



JRG 1203



JRG 1208



JRG 1204



JRG 1209



JRG 1210



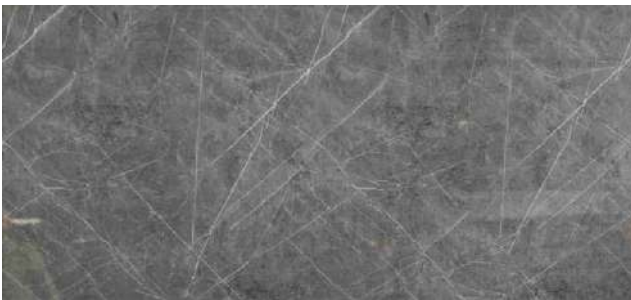
JRG 1215



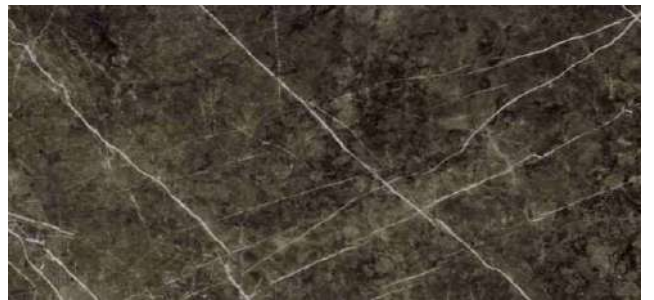
JRG 1211



JRG 1216



JRG 1212



JRG 1217



JRG 1213



JRG 1218



JRG 1214



JRG 1219



JRG 1221



JRG 1231



JRG 1222



JRG 1232



JRG 1223



JRG 1236



JRG 1227



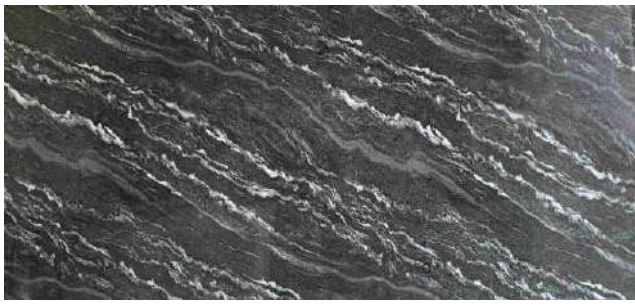
JRG 1237



JRG 1230



JRG 1238



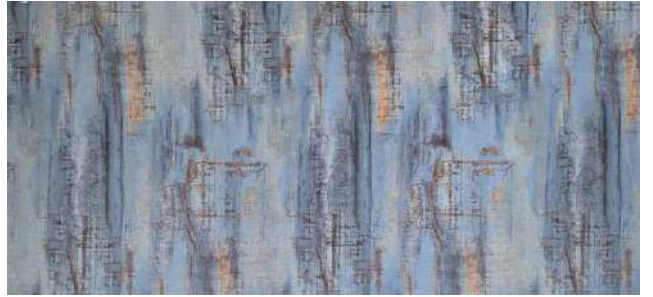
JRG 1258



JRG 1263



JRG 1259



JRG 1264



JRG 1260



JRG 1265



JRG 1261



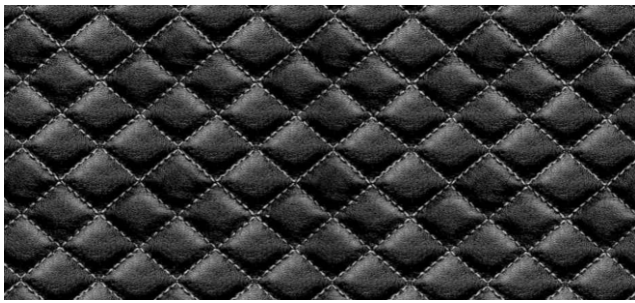
JRG 1266



JRG 1262



JRG 2001



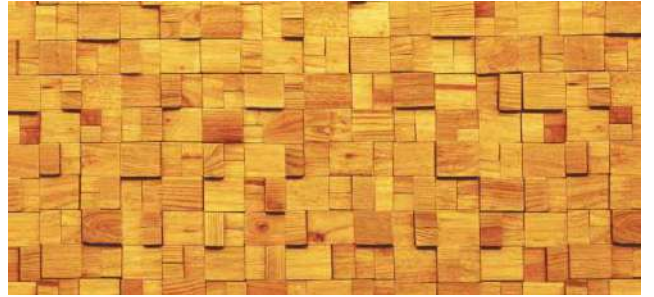
JRG 2002



JRG 2007



JRG 2003



JRG 2008



JRG 2004



JRG 2009



JRG 2005



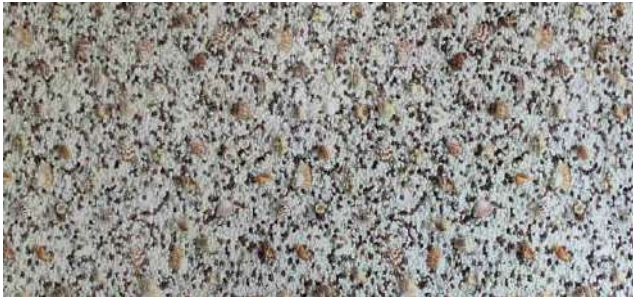
JRG 2011



JRG 2006



JRG 2012



JRG 2013



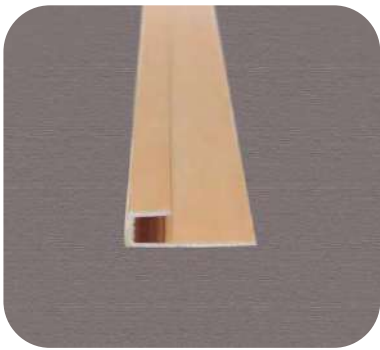
JRG 2016



JRG 2017

UV Marble Sheet

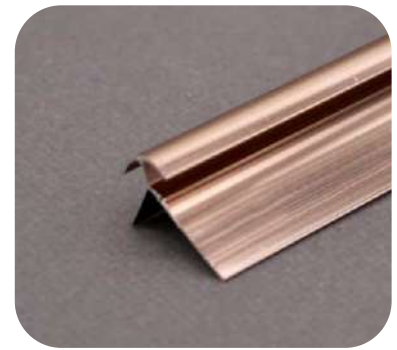
Alluminum Accessories



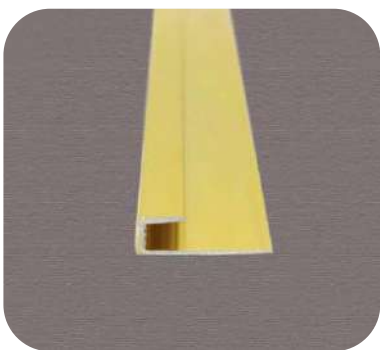
JRG 25mm



JRG 25mm



JRG 25mm



JRG 25mm



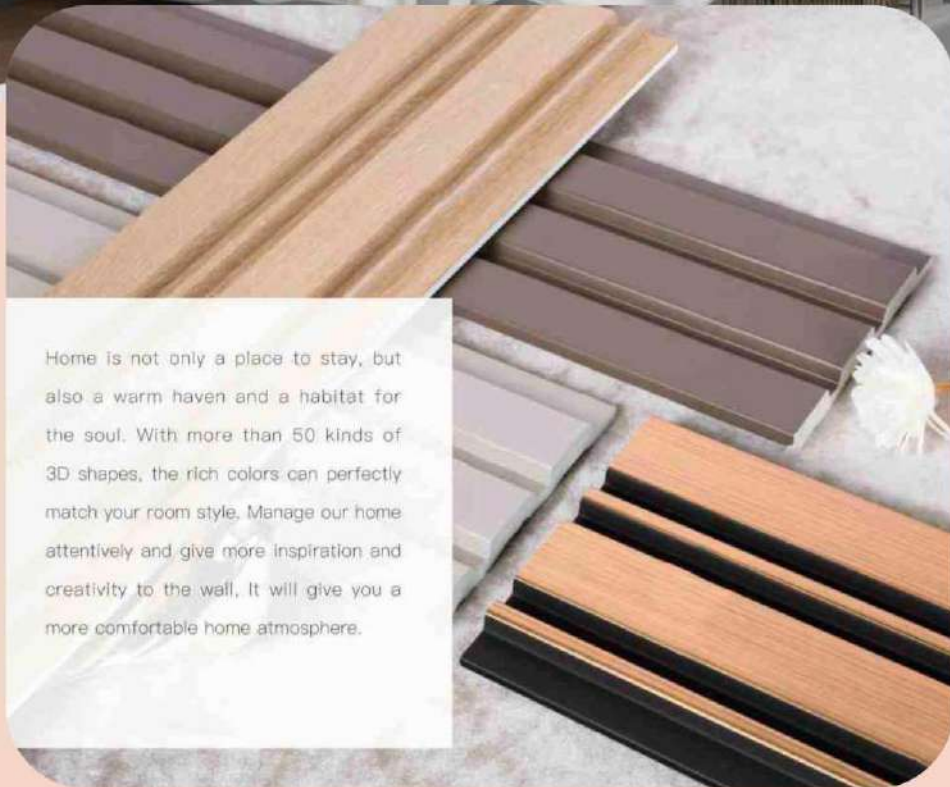
JRG 25mm



JRG 25mm

The background is a dark, almost black, field filled with intricate, light-colored (pale yellow or gold) line art. The design consists of several overlapping elements: a vertical line on the left side, a vertical line on the right side, and a series of concentric, wavy lines that resemble topographical contours or ripples. These wavy lines are arranged in a way that they intersect to form a subtle grid pattern, particularly visible on the right side of the image. The overall effect is a complex, layered geometric and organic pattern.

CHARCOAL LOUVERS



Home is not only a place to stay, but also a warm haven and a habitat for the soul. With more than 50 kinds of 3D shapes, the rich colors can perfectly match your room style. Manage our home attentively and give more inspiration and creativity to the wall, It will give you a more comfortable home atmosphere.

Finished Panel Colors



Indoor Charcoal Wall Panel Specifications

Brand : JRG Laminates PVT. LTD.

Size : 5, 6, 7, 8 & 12 inch

Certificate : CE, SGS

Length : 2800mm, 2900mm or customized

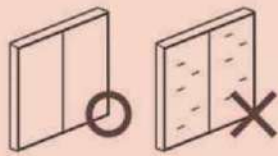
Color : White/Golden/Silver/Red/Black/Yellow

Feature : Eco-Friendly, Waterproof, Fireproof, Lightweight, Easy to install

Application : Hotels, Office, Home, Commercial Buildings, Restaurants, Hospitals, Schools and other interior decorations.

Material : Polystyrene/Polyurethane/PS

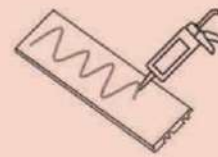
Accessories & Installation



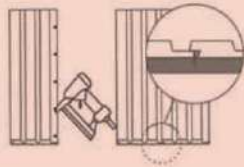
- 1** Prep-work with plaster board or plywood is recommended before the construction. Please remove wallpapers on the walls before the construction



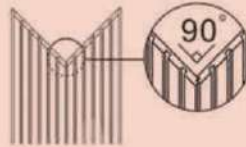
- 2** Circular saw can be used for cutting.



- 3** Apply nail free glue on the back of wall panel.



- 4** Wall panel can be installed in both horizontal and vertical direction. Apply air-tractor on the edge of the tongue to hide the pin-marks.



- 5** For corner, combine the two grooves.



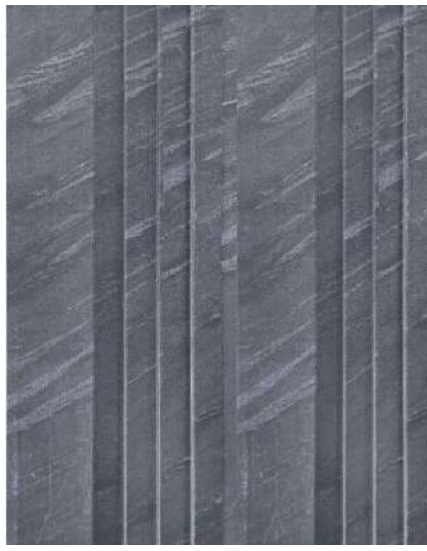
- 6** Coordinating mouldings can be used for clean and nice finish.

Indoor Ps Wall Panel Colors





CL- 5001



CL- 5002



CL- 5003



CL- 5004



CL- 5005



CL- 5006



CL- 5007



CL- 5008



CL- 5010





CL- 5011



CL- 5012



CL- 5013



CL- 5014



CL- 5015



CL- 5016



CL- 5017



CL- 5018



CL- 5019

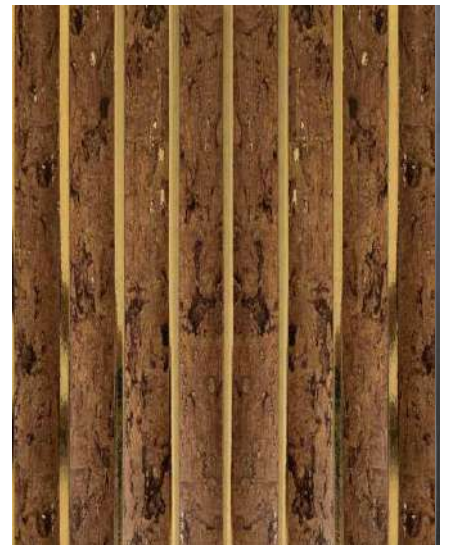




CL- 7002



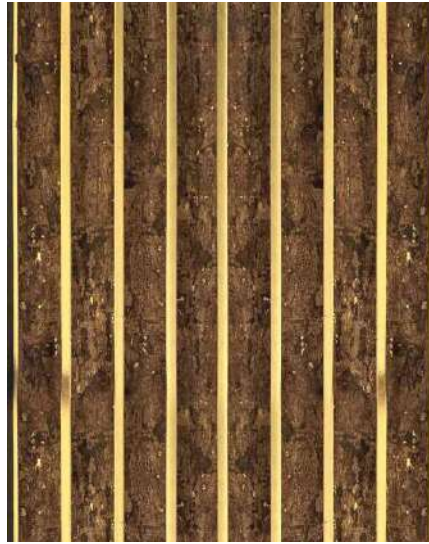
CL- 7003



CL- 7004



CL- 7005



CL- 7006



CL- 7007



CL- 7008



CL- 7009



CL- 7010



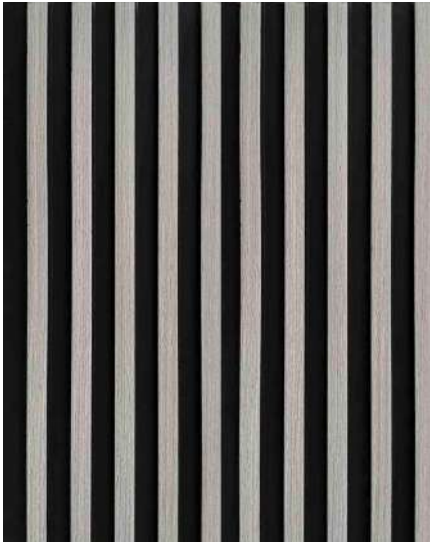
CL- 7011



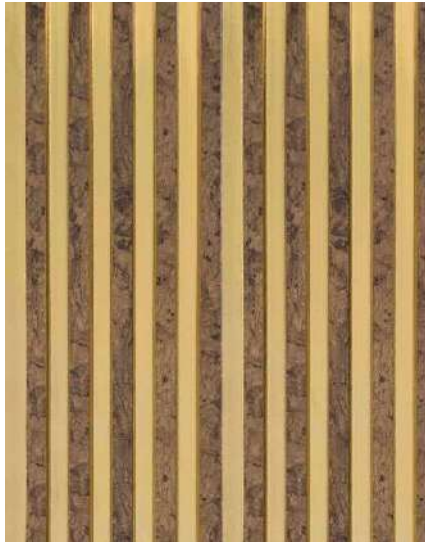
CL- 7012



CL- 7014



CL- 7015



CL- 7017



CL- 7019



CL- 7020



CL- 7022

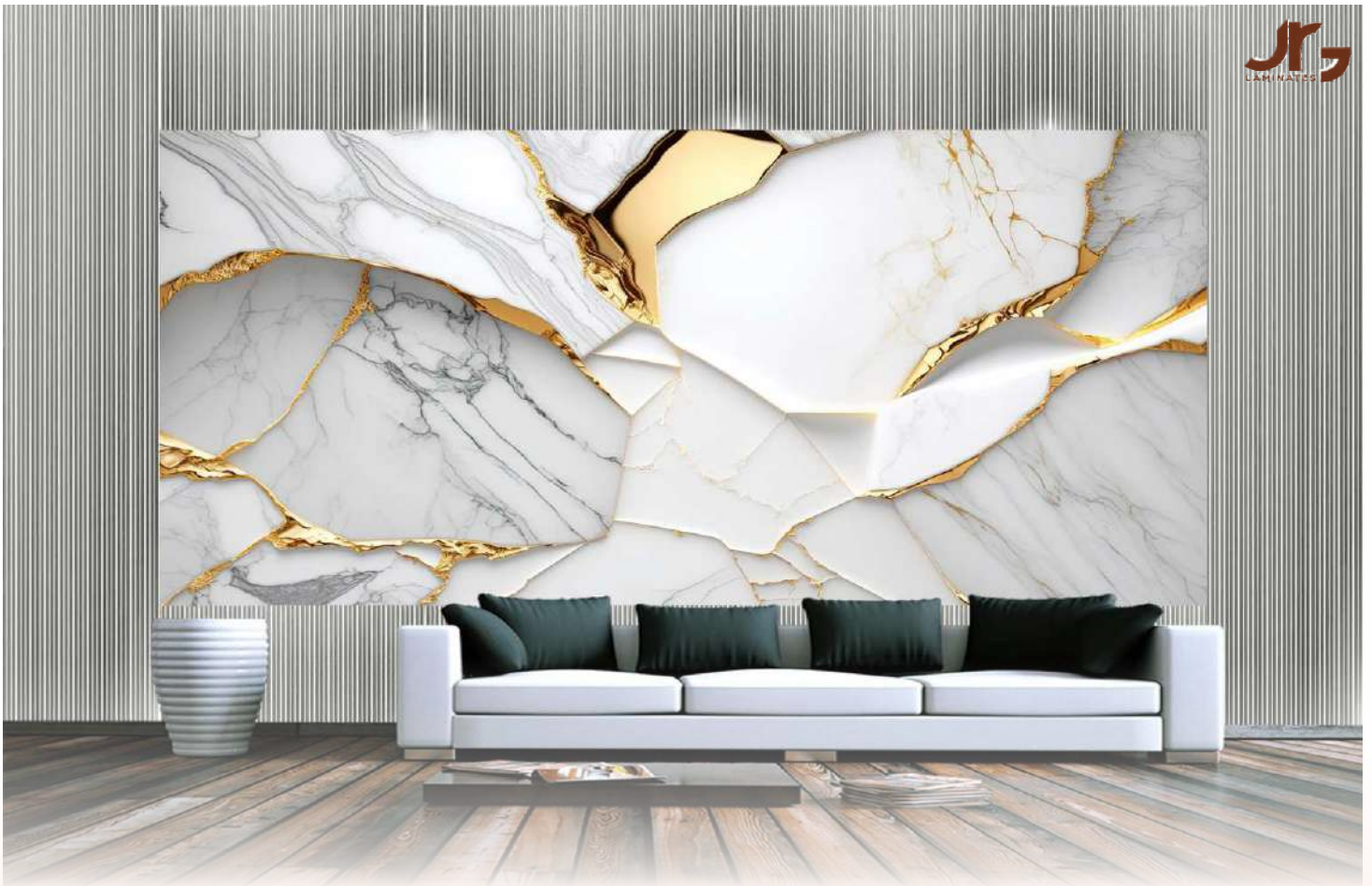


CL- 7024



The background features a dark, almost black, field with intricate, light-colored wavy lines that create a marble-like pattern. A single, solid vertical line runs down the center of the page, framing the text.

DIGITAL
MARBLE
SHEET



DIGITAL MARBLE DESIGNS

JRG Digital marble design sheets refer to digitally created or simulated sheets that showcase various marble patterns and designs.

These sheets are typically used in the interior design and construction industries for planning and visualizing how marble surfaces will appear in a given space. Unlike traditional marble, which is a natural stone, digital marble design sheets are crafted using computer-generated graphics to replicate the intricate details and veining patterns found in real marble.

Benefits and Features



Termite
Proof



Chemical &
Moisture Free



Maintenance
Free



100% Water
Proof



Superb
Quality

Technical Specification

Thickness : 2 mm | 3 mm

Size : 8 Feet x 4 Feet



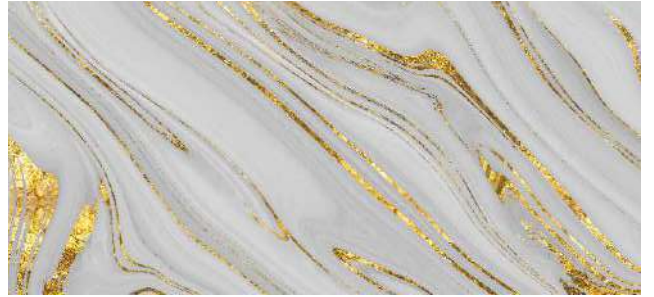
JRG 1801



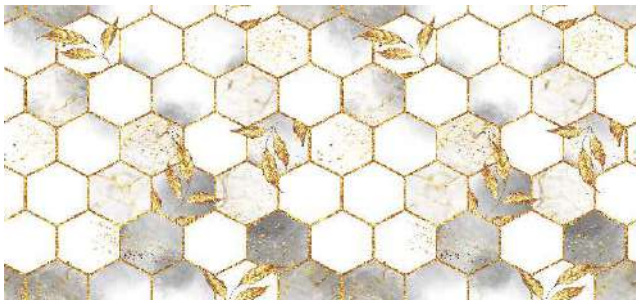
JRG 1806



JRG 1802



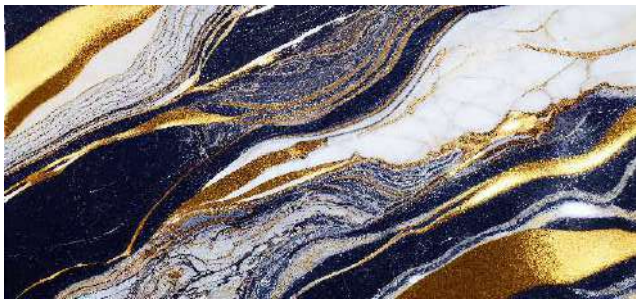
JRG 1807



JRG 1803



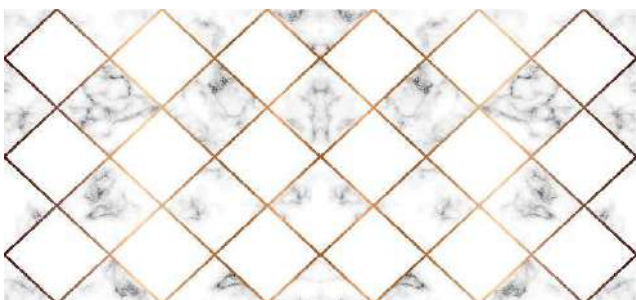
JRG 1808



JRG 1804



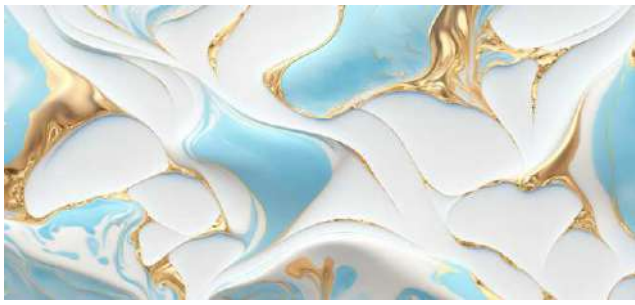
JRG 1809



JRG 1805



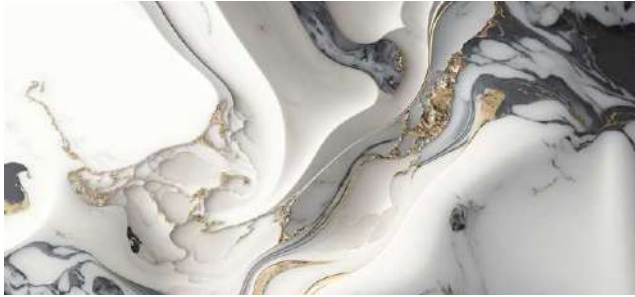
JRG 1810



JRG 1854



JRG 1865



JRG 1855



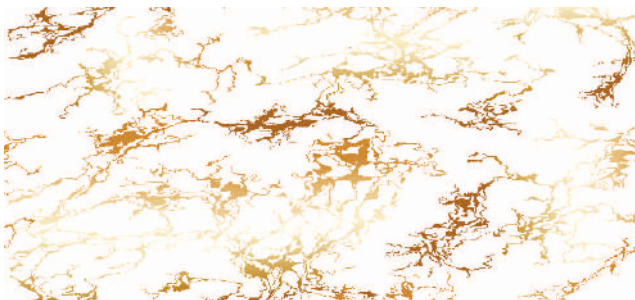
JRG 1866



JRG 1858



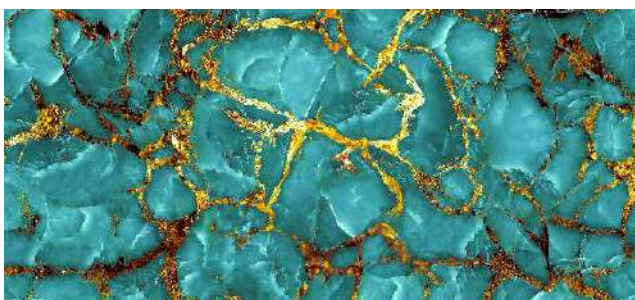
JRG 1875



JRG 1860



JRG 1879



JRG 1864



JRG 1880



HD & 3D Designs

JRG HD & 3D Design sheets refer to digitally created or simulated sheets that showcase various marble patterns and designs.

These sheets are typically used in the interior design and construction industries for planning and visualizing how marble surfaces will appear in a given space. Unlike traditional marble, which is a natural stone, digital marble design sheets are crafted using computer-generated graphics to replicate the intricate details and veining patterns found in real marble.

Benefits and Features



Termite
Proof



Chemical &
Moisture Free



Maintenance
Free



100% Water
Proof



Superb
Quality

Technical Specification

Thickness : 2 mm | 3 mm

Size : 8 Feet x 4 Feet



HD - 1



HD - 9



HD - 3



HD - 11



HD - 4



HD - 13



HD - 6



HD - 16



HD - 8



HD - 21



HD - 22



HD - 44



HD - 30



HD - 32



HD - 38



HD - 40

The background is a dark, almost black, field filled with intricate, light-colored (pale yellow or cream) wavy lines that resemble topographical contours or fluid motion. Two prominent, solid vertical lines of the same color are positioned on the left and right sides of the frame, intersecting the wavy patterns. The overall aesthetic is modern and minimalist.

FRENCH MOULDING



Benefits and Features



Termite
Proof



Chemical &
Moisture Free



Maintenance
Free



100% Water
Proof



Superb
Quality

22 MM



JRG22

22 MM



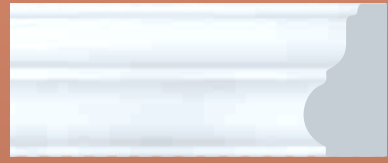
JRG22-1

30 MM



JRG30

30 MM



JRG30-1

38 MM



JRG38

38 MM



JRG38-1

45 MM



JRG45

65 MM



JRG65



PU CORNER FLOWER

PAINTABLE



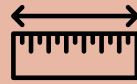
205 MM X 150 MM X 150 MM



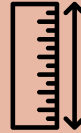
120 MM X 120 MM X 145 MM



WPC DOOR FRAME



75mm x 45mm, 75mm x 50mm
 90mm x 45mm, 100mm x 50mm
 100mm x 60mm, 100mm x 63mm
 125mm x 63mm, 150mm x 60mm



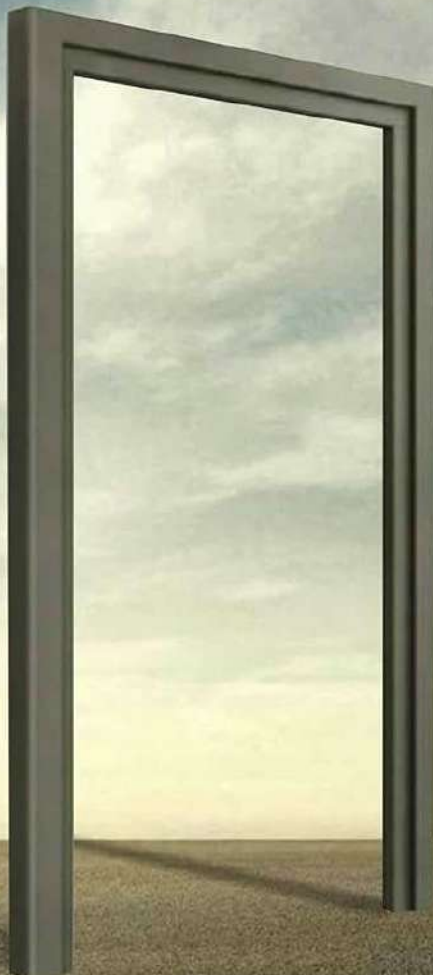
Any Length



Beige color & any type of surface treatment are possible



0.850g/cm³
 (High screw holding capacity)



Technical Specifications

Density 997.5kg/m ³	Moisture Content 0.39%
Tensile Strength 39.45 N/m ²	Edge Loading Test 162 N
Screw Withdraw Strength Face : 15.5 N Edge : 895 N	Resistance To Steam : Passing The Test
Nail Withdraw Strength Face : 890 N Edge : 730 N	Workability : Satisfactory
Water Absorption At 2 Hrs : 0.17% At 24 Hrs : 0.42%	Fungus Proof : Satisfactory
Modulus Of Rupture 35.8 N/m ²	Knife Test : Passing The Test
Modulus Of Elasticity 1914 N/mm ²	Squareness : 0.043 Mm

SPECIFICATIONS



Single Rebated

150mm x 62mm

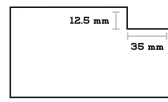
(6" x 2½")

62 mm



150 mm

62 mm



125 mm

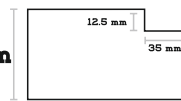


Single Rebated

125mm x 62mm

(5" x 2½")

55 mm



100 mm

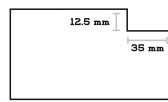


Single Rebated

150mm x 62mm

(4" x 2½")

62 mm



100 mm



Single Rebated

150mm x 62mm

(4" x 2½")

SPECIFICATIONS



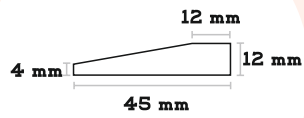
Single Rebated

75mm x 50mm

(3" x 2")

50 mm

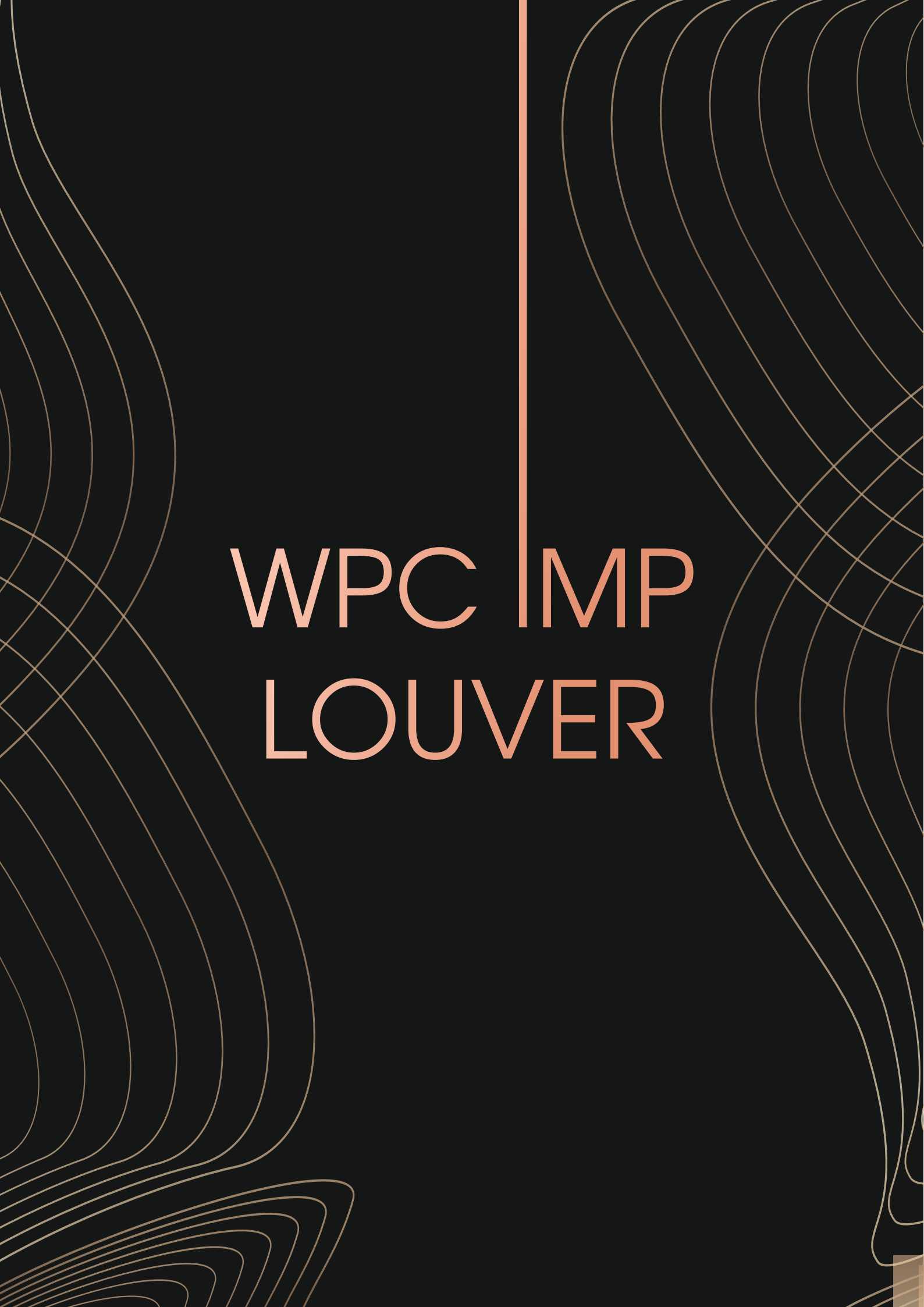
75 mm



Moulding

45mm x 12mm



The background features a dark, almost black, field filled with intricate, white, wavy lines that resemble topographical contours or fluid motion. A single, solid, vertical orange line runs down the center of the image, intersecting the text.

WPC IMP
LOUVER



LR - 8

WPC IMP LOUVERS

Benefits and Features



Termite
Proof



Chemical &
Moisture Free



Maintenance
Free



100% Water
Proof



Superb
Quality

Technical Specification

Thickness : 26 mm

Size : 9.5 Feet



LR - 1



LR - 2



LR - 3



LR - 4



LR - 5



LR - 6



LR - 7



LR - 8



LR - 9





LR - 11



LR - 12



LR - 14



LR - 17



LR - 20



LR - 27



The background features a dark, textured pattern of thin, wavy, light-colored lines that create a sense of depth and movement. Two prominent, solid vertical lines in a light orange or peach color run parallel to each other, one on the left and one on the right, framing the central text.

FLUTED LOUVERS



4 L - 208



4 L - 209



4 L - 210



4 L - 211



4 L - 218



4 L - 219



4 L - 226



4 L - 227



4 L - 281



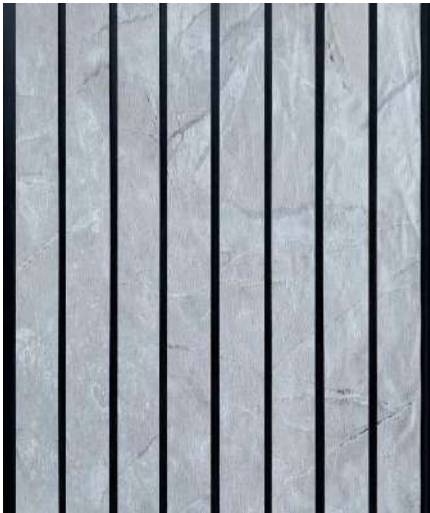
7 L - 208



7 L - 209



7 L - 218



7 L - 219



7 L - 221



7 L - 228



7 L - 250



7 L - 281



7 L - 289



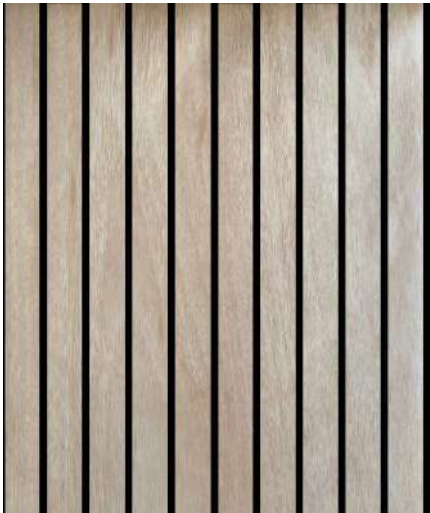
9L - 208



9L - 209



9L - 221



9L - 226



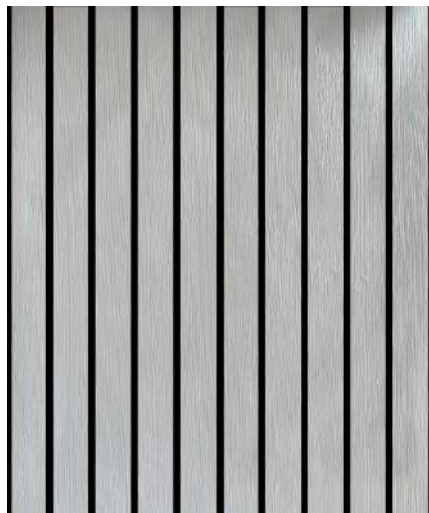
9L - 227



9L - 228



9L - 250



9L - 257



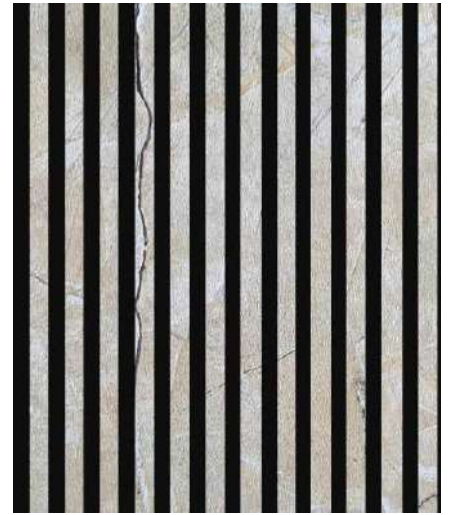
9L - 264



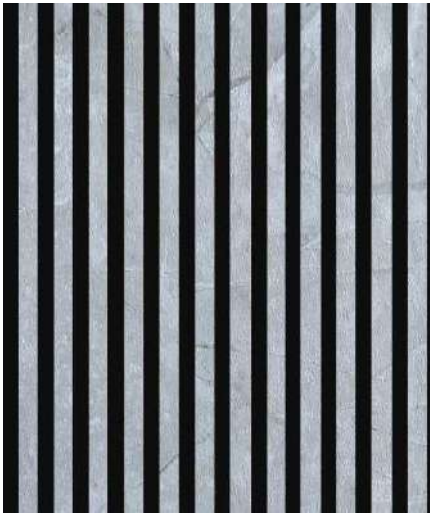
12L - 211



12L - 212



12L - 218



12L - 218



12L - 228



12L - 250



12L - 263



12L - 265



12L - 266



4S - 208



4S - 209



4S - 211



4S - 212



4S - 218



4S - 219



4S - 247



4S - 248



4S - 265



6S - 225



6S - 226



6S - 227



6S - 228



6S - 271



6S - 272



6S - 281



6S - 289



6S - 290

JRG Laminates EXTAFF is a solvent based high strength construction adhesive. It bonds wood, concrete board, metals, masonry, ceramics and glass. Reduces the need for screws and nails.

Directions :

1. Ensure the surfaces to be bonded are clean and dry.
2. Cut the nozzle and fit to a cartridge gun.
3. Apply a zig zag bead of the adhesive along the joint, panel or stud. Assemble the joint within 10 minutes and clamp with nails, screws or fasteners for at least 24 hours.
4. Remove wet adhesive excess with mineral turpentine. Dry excess can be sanded or scraped.

Warning :

- Keep out of reach from children.
- Do not inhale vapours this product.



CONSTRUCTION ADHESIVE

SILICON SEALANT

- Low VOC
- Non Sag
- Flexible



PREMIUM ACETOXY CURE



Raised Flooring



Comices & Moldings



Mirror



Steel Stud/Fiber Board

JRG LAMINATES PVT. LTD.

- Factory Outlet -

#3245/118/2A, Opp. Bharat Petrol Pump,
Near ATI Chowk, Gill Road, Ludhiana, (Punjab)

- Manufacturing -

SH11, Jakhhal Road, Sunam - 148028 (Punjab)

- Corporate Office -

#1734, Sector - 21, Panchkula

info.jrglaminatespvtltd@gmail.com